

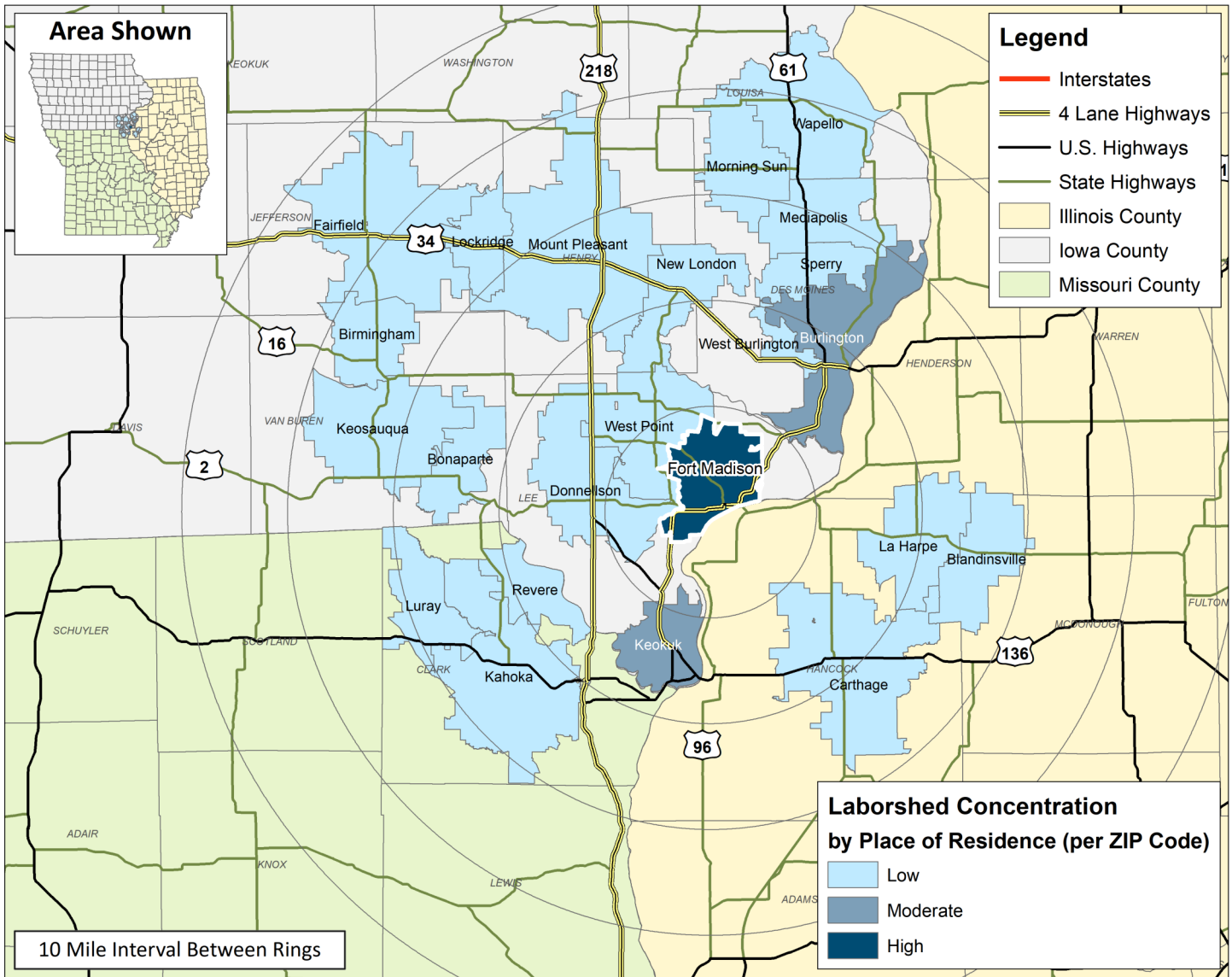
LABOR CHARACTERISTICS

ADVANCED MANUFACTURING



FORT MADISON LABORSHED AREA

CONCENTRATION OF RESPONDENTS WITHIN THE LABORSHED AREA WITH TRANSFERABLE EXPERIENCE/SKILLS BY PLACE OF RESIDENCE



Workers who have transferable experience/skills in the industry are currently commuting an average of 13 miles one way for work. Those who are likely to change/accept employment are willing to commute an average of 24 miles one way for the right employment opportunity.

FOR MORE INFORMATION REGARDING THE FORT MADISON, IA LABORSHED, CONTACT:

LABOR CHARACTERISTICS

ADVANCED MANUFACTURING

ESTIMATED AVAILABLE LABOR PER OCCUPATIONAL CATEGORY:

- Assemblers & Fabricators, All Other - 429
- Electrical Engineers - 424
- Electricians - 426
- Electronic Equipment Installers & Repairers, Motor Vehicles - 211
- Engineers, All Other - 855
- Extruding & Drawing Machine Operators - 214
- Heavy & Tractor-Trailer Truck Drivers - 2,351
- Industrial Engineering Technicians - 210
- Industrial Engineers - 425
- Industrial Machinery Mechanics - 212
- Industrial Production Managers - 208
- Inspectors, Testers, Sorters, Samplers, & Weighers - 217
- Installation, Maintenance, & Repair Workers - 1,710
- Laborers & Freight, Stock, & Material Movers, Hand - 431
- Machinists - 215
- Mechanical Engineers - 209
- Millwrights - 213
- Mixing & Blending Machine Operators - 216
- Multiple Machine Tool Operators - 1,283
- Packaging & Filling Machine Operators & Tenders - 218
- Packers & Packagers, Hand - 432
- Production Workers, All Other - 3,205
- Supervisors of Mechanics, Installers, & Repairers - 427
- Supervisors of Production & Operating Workers - 641
- Tank Car, Truck, & Ship Loaders - 219
- Team Assemblers - 428
- Welders, Cutters, Solderers, & Brazers - 430

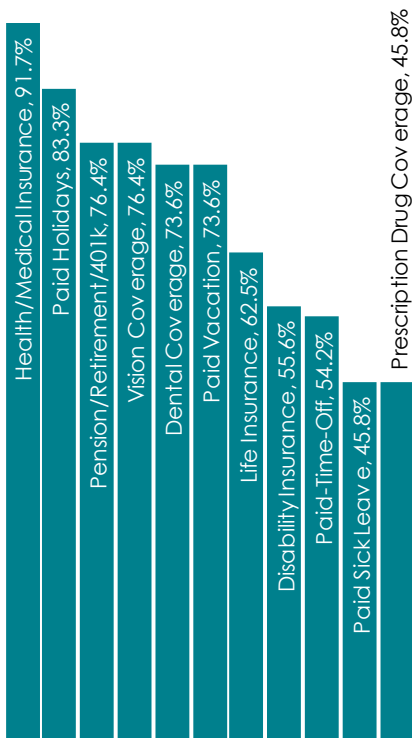
AN ESTIMATED TOTAL OF **16,459** PEOPLE IN THE LABORSHED AREA

UNDEREMPLOYMENT (ESTIMATED):

- Low hours - 0.0%
- Low income - 2.6% (60)
- Mismatch of skills - 5.2% (121)
- Total - 6.5% (151)

(Individuals counted only once when estimating Total Underemployment.)

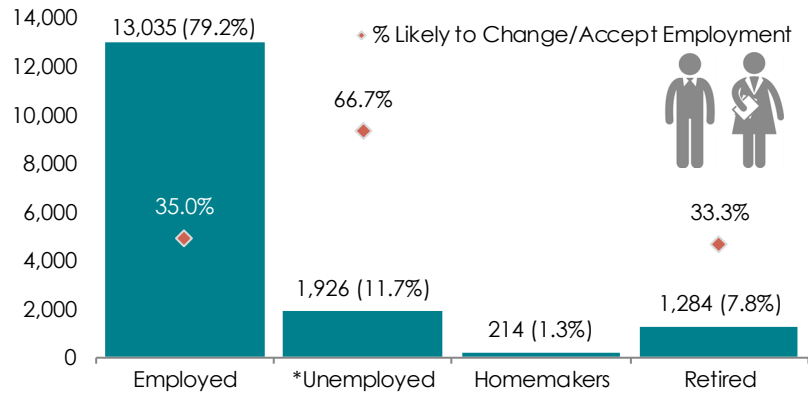
CURRENT BENEFITS:



DESIRED BENEFITS:



ESTIMATED TOTAL BY EMPLOYMENT STATUS (PERCENTAGE):



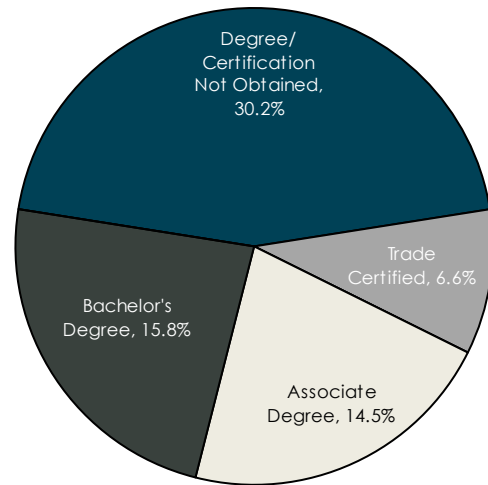
*Employment status is self-identified by the survey respondent. The unemployment percentage does not reflect the unemployment rate published by the U.S. Bureau of Labor Statistics, which applies a stricter definition.

EMPLOYMENT STATS:

- 70.7% paid an hourly wage
- 96.1% are/were employed full-time
- 3.9% are/were employed part-time
- 8.0% are/were self-employed
- 11.7% hold two or more jobs
- Currently working an average of 46 hours/week

EDUCATIONAL LEVEL:

(67.1% HAVE AN EDUCATION BEYOND HIGH SCHOOL)



TOP JOB SEARCH RESOURCES:

(For those seeking employment opportunities, by use.)

- Internet - 54.8%
 - www.indeed.com
 - www.iowaworks.gov
 - www.linkedin.com
- IowaWORKS Centers - 43.8%
- Networking through friends, family or acquaintances - 34.2%
- Job/Career Fairs - 30.1%



WORKPLACE FLEXIBILITY:

(by percent of interest)

- Varied shifts - 66.7%
- Cross-training - 58.3%
- Job sharing - 56.5%
- Job teams - 33.3%
- Seasonal work - 36.7%
- Temporary work - 36.7%



LABOR CHARACTERISTICS



ADVANCED MANUFACTURING

| OCCUPATION | OCCUPATIONAL CODE | MEAN WAGE | ENTRY WAGE | EXPERIENCED WAGE | MEDIAN WAGE | MEAN ANNUAL SALARY |
|---|-------------------|-----------|------------|------------------|-------------|--------------------|
| Architectural and Engineering Managers | 11-9041 | \$52.49 | \$39.42 | \$59.03 | \$48.54 | \$109,188 |
| Bus and Truck Mechanics and Diesel Engine Specialists | 49-3031 | \$20.44 | \$15.57 | \$22.87 | \$19.75 | \$42,509 |
| Chemical Engineers | 17-2041 | \$49.94 | \$35.79 | \$57.01 | \$47.84 | \$103,875 |
| Coating, Painting, and Spraying Machine Setters, Operators, and Tenders | 51-9121 | \$16.18 | \$12.88 | \$17.82 | \$16.25 | \$33,645 |
| Computer Numerically Controlled Machine Tool Programmers, Metal and Plastic | 51-4012 | \$19.50 | \$17.55 | \$20.48 | \$19.19 | \$40,569 |
| Computer-Controlled Machine Tool Operators, Metal and Plastic | 51-4011 | \$15.78 | \$10.81 | \$18.27 | \$14.64 | \$32,829 |
| Conveyor Operators and Tenders | 53-7011 | \$15.03 | \$11.14 | \$16.97 | \$13.94 | \$31,256 |
| Crane and Tower Operators | 53-7021 | \$20.21 | \$13.21 | \$23.72 | \$19.03 | \$42,047 |
| Cutting and Slicing Machine Setters, Operators, and Tenders | 51-9032 | \$18.60 | \$15.36 | \$20.21 | \$17.96 | \$38,678 |
| Electrical Engineers | 17-2071 | \$43.68 | \$29.66 | \$50.69 | \$44.74 | \$90,845 |
| Electricians | 47-2111 | \$26.11 | \$17.23 | \$30.54 | \$27.23 | \$54,302 |
| Engineering Technicians, Except Drafters, All Other | 17-3029 | \$28.11 | \$19.26 | \$32.53 | \$27.33 | \$58,468 |
| Engineers, All Other | 17-2199 | \$37.65 | \$22.52 | \$45.22 | \$38.49 | \$78,321 |
| First-Line Supervisors of Mechanics, Installers, and Repairers | 49-1011 | \$28.95 | \$17.31 | \$34.77 | \$28.76 | \$60,215 |
| First-Line Supervisors of Production and Operating Workers | 51-1011 | \$29.73 | \$18.98 | \$35.11 | \$27.86 | \$61,847 |
| Heavy and Tractor-Trailer Truck Drivers | 53-3032 | \$19.84 | \$14.54 | \$22.50 | \$19.23 | \$41,275 |
| Helpers--Production Workers | 51-9198 | \$14.90 | \$10.77 | \$16.97 | \$15.24 | \$30,994 |
| Industrial Engineering Technicians | 17-3026 | \$33.87 | \$22.65 | \$39.47 | \$34.47 | \$70,445 |
| Industrial Engineers | 17-2112 | \$37.97 | \$29.48 | \$42.22 | \$36.95 | \$78,983 |
| Industrial Machinery Mechanics | 49-9041 | \$24.22 | \$17.18 | \$27.75 | \$25.12 | \$50,387 |
| Industrial Production Managers | 11-3051 | \$49.90 | \$33.35 | \$58.18 | \$46.96 | \$103,800 |
| Inspectors, Testers, Sorters, Samplers, and Weighers | 51-9061 | \$18.07 | \$13.38 | \$20.42 | \$16.95 | \$37,593 |
| Laborers and Freight, Stock, and Material Movers, Hand | 53-7062 | \$16.46 | \$11.75 | \$18.82 | \$15.97 | \$34,239 |
| Light Truck or Delivery Services Drivers | 53-3033 | \$15.23 | \$9.59 | \$18.04 | \$13.69 | \$31,671 |
| Machine Feeders and Offbearers | 53-7063 | \$21.98 | \$19.75 | \$23.10 | \$22.63 | \$45,729 |
| Machinists | 51-4041 | \$16.61 | \$12.76 | \$18.54 | \$15.59 | \$34,558 |
| Maintenance and Repair Workers, General | 49-9071 | \$21.80 | \$13.22 | \$26.09 | \$20.85 | \$45,344 |
| Maintenance Workers, Machinery | 49-9043 | \$20.73 | \$15.94 | \$23.13 | \$19.64 | \$43,127 |
| Materials Engineers | 17-2131 | \$53.05 | \$30.24 | \$64.45 | \$36.70 | \$110,335 |
| Mechanical Drafters | 17-3013 | \$25.55 | \$17.63 | \$29.51 | \$24.46 | \$53,147 |
| Mechanical Engineers | 17-2141 | \$38.16 | \$28.50 | \$42.98 | \$37.14 | \$79,366 |
| Millwrights | 49-9044 | \$24.80 | \$16.85 | \$28.78 | \$26.11 | \$51,591 |
| Mixing and Blending Machine Setters, Operators, and Tenders | 51-9023 | \$22.17 | \$14.94 | \$25.79 | \$23.20 | \$46,121 |
| Molding, Coremaking, and Casting Machine Setters, Operators, and Tenders, Metal and Plastic | 51-4072 | \$14.33 | \$10.55 | \$16.22 | \$12.84 | \$29,799 |
| Multiple Machine Tool Setters, Operators, and Tenders, Metal and Plastic | 51-4081 | \$17.12 | \$13.51 | \$18.92 | \$15.76 | \$35,599 |
| Packaging and Filling Machine Operators and Tenders | 51-9111 | \$14.71 | \$11.54 | \$16.30 | \$13.63 | \$30,605 |
| Packers and Packers, Hand | 53-7064 | \$12.73 | \$11.26 | \$13.46 | \$12.32 | \$26,470 |
| Production Workers, All Other | 51-9199 | \$21.91 | \$12.32 | \$26.71 | \$24.63 | \$45,575 |
| Structural Metal Fabricators and Fitters | 51-2041 | \$20.07 | \$15.42 | \$22.39 | \$18.88 | \$41,742 |
| Tool and Die Makers | 51-4111 | \$23.20 | \$18.88 | \$25.36 | \$23.42 | \$48,258 |
| Welders, Cutters, Solderers, and Brazers | 51-4121 | \$17.06 | \$14.25 | \$18.46 | \$17.38 | \$35,480 |

The 2019 Iowa Wage data for the Fort Madison Laborshed area was produced by the Labor Force & Occupational Analysis Bureau to provide communities local information on wages by occupation. The source of the wage and employment data is based on the May 2018 OES estimates. Additional occupational wage and employment data can be found at www.iowalmi.gov/laborshed.