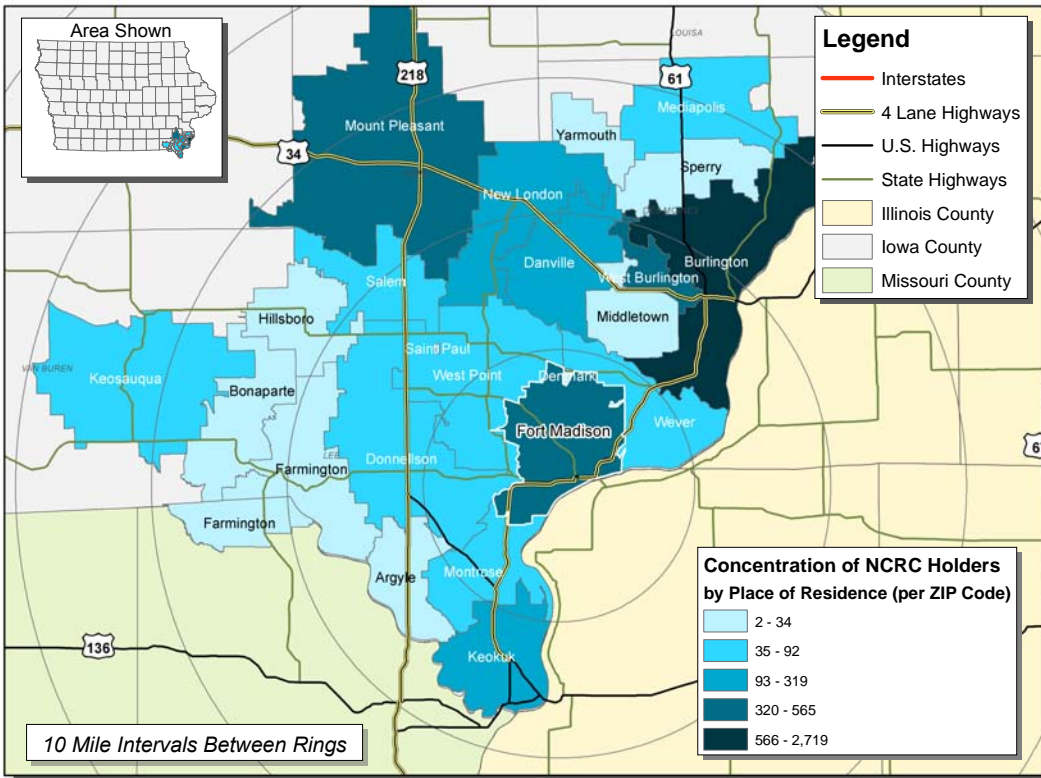


NATIONAL CAREER READINESS CERTIFICATE (NCRC):

LEE COUNTY, IOWA LABORSHED AREA†

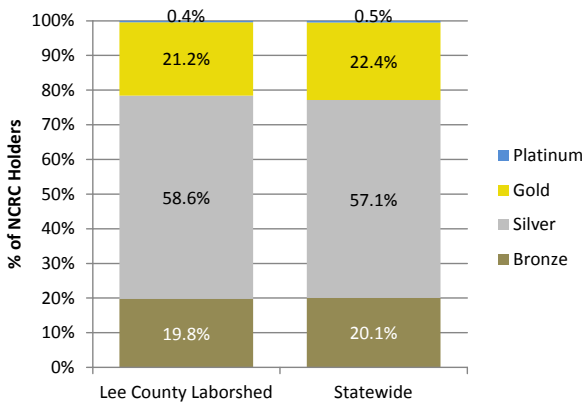


Left: Map of the number of National Career Readiness Certificate (NCRC) holders by ZIP code of residence within the Lee County Laborshed area earned between April 2009 and January 2016.

- The largest concentrations of NCRC holders in the Laborshed area reside in Burlington, Mount Pleasant and Fort Madison.

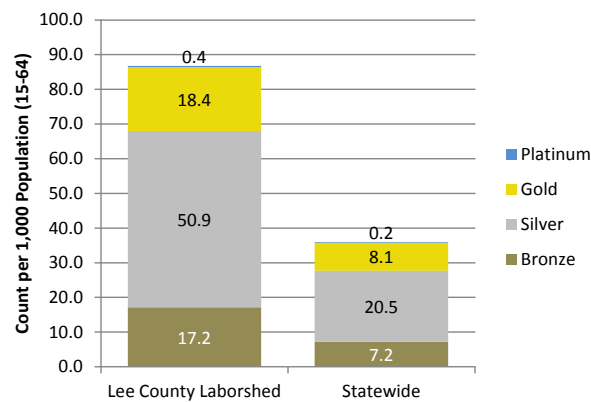
†Data only includes NCRC recipients residing in Iowa.

NCRCs by Certificate Level*



*An explanation of NCRC award levels is on the following page.

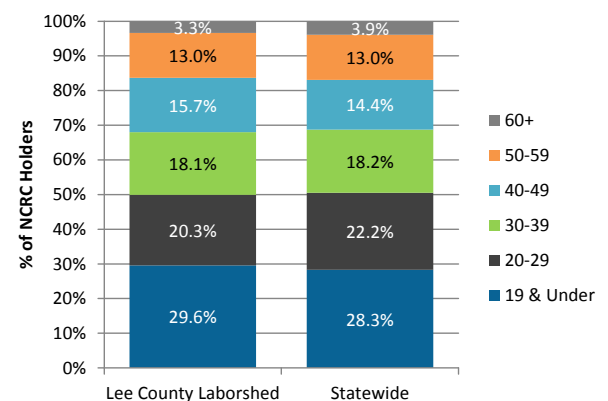
NCRCs by Certificate Level (per 1,000 population 15-64)**



**Population data based on ACS 2013 5-year estimates (2009-2013)

- 5,358 NCRC holders indicated they were living within the Lee County Laborshed area at the time of certification.
- 21.6 percent of NCRC holders within the Lee County Laborshed area earned a gold or platinum certificate, compared to 22.9 percent of all statewide recipients who earned gold or platinum.
- 86.9 of every 1,000 people between the ages of 15 and 64, in the Lee County Laborshed area earned an NCRC compared to 36.0 of every 1,000 statewide.
- 49.9% of NCRC recipients within the Laborshed area were 29 years old or younger when the award was earned.

NCRCs by Recipient Age When Earned***



*** Recipients with unknown age excluded

NATIONAL CAREER READINESS CERTIFICATE (NCRC):

The ACT NCRC is a portable, evidence-based credential of foundational workplace skills. The NCRC is based on skills assessments and job analysis data that link scores to the ability to perform actual job tasks. The NCRC documents these work-related skills:

- Problem solving
- Critical thinking
- Reading and using work-related text
- Applying information from workplace documents to solve problems
- Applying mathematical reasoning to work-related problems
- Setting up and performing work-related mathematical calculations
- Locating, synthesizing and applying information that is presented graphically
- Comparing, summarizing and analyzing information presented in multiple related graphics

Three assessments comprise the National Career Readiness Certificate; Applied Mathematics, Locating Information and Reading for Information. These assessments measure “real world” skills that employers report as critical to job success. Test questions are based on situations in the everyday work world. NCRC certificates are issued to those scoring a level three or higher on each of the following assessments:

The *Applied Mathematics*: This assessment measures the level of skill people use when they apply mathematical reasoning, critical thinking and problem-solving techniques to work-related problems. The test questions require the examinee to set up and solve the types of problems and do the types of calculations that occur frequently in the workplace.

The *Locating Information*: This assessment measures the level of skill people use when they work with workplace graphics. Examinees are asked to find information in a graphic or insert information into a graphic. They also must compare, summarize and analyze information found in related graphics.

The *Reading for Information*: This assessment measures the level of skill people use when they read and use written text in order to do a job. The written texts include memos, letters, directions, signs, notices, bulletins, policies and regulations. It is often the case that workplace communications are not necessarily well-written or targeted to the appropriate audience. *Reading for Information* materials do not include information that is presented graphically, such as in charts, forms or blueprints.

The credentials are categorized into four levels based on the scores from the ACT WorkKeys database.

- **Bronze** - scores at least a level 3 in each of the three core areas and has the necessary foundational skills for 16 percent of the jobs in the database.
- **Silver** - scores at least a level 4 in each of the three core areas and has the necessary foundational skills for 67 percent of the jobs in the database.
- **Gold** - scores at least a level 5 in each of the three core areas and has the necessary foundational skills for 93 percent of the jobs in the database.
- **Platinum** - scores at least a level 6 in each of the three core areas and has the necessary foundational skills for 99 percent of the jobs in the database.

