

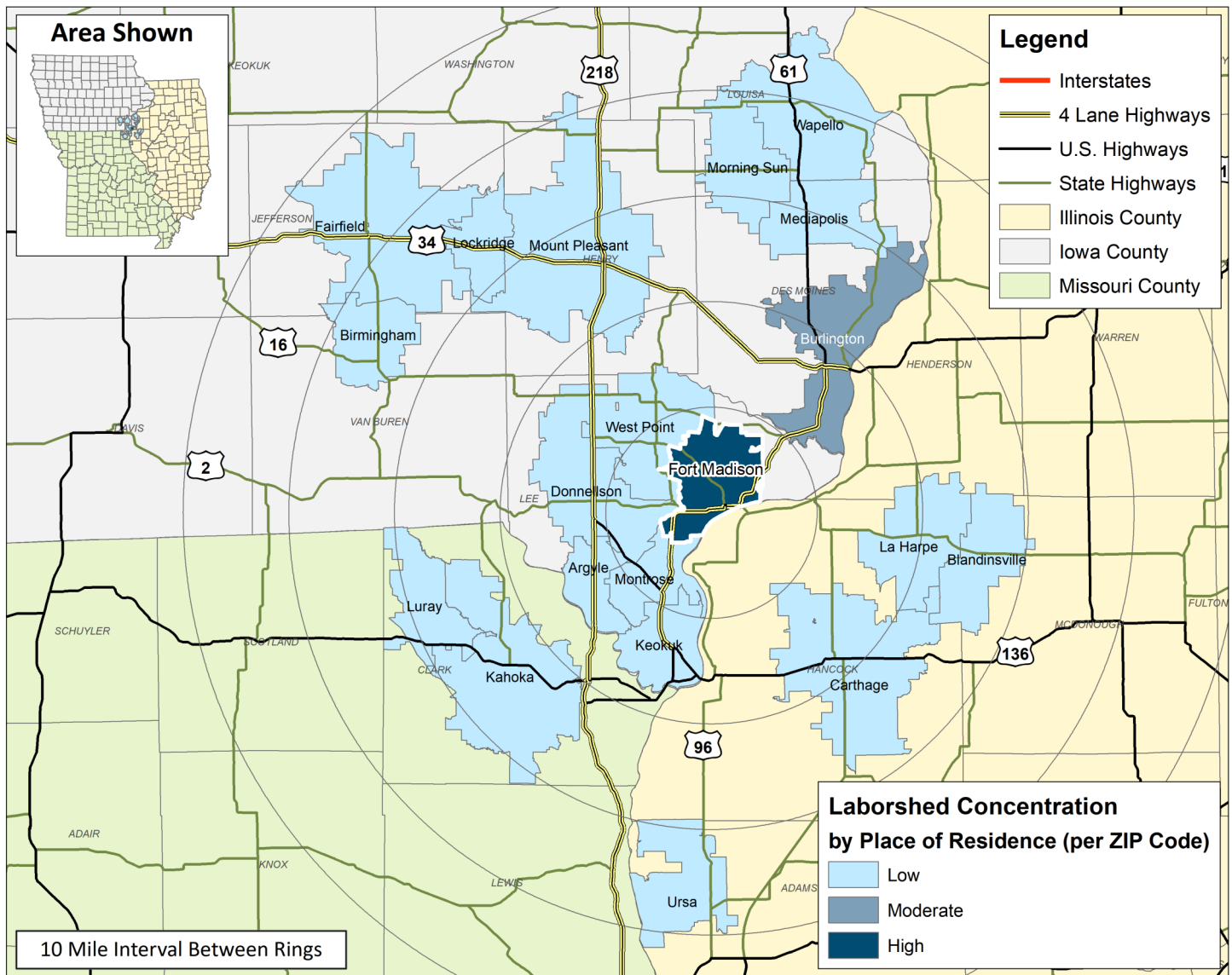
LABOR CHARACTERISTICS

WAREHOUSE & DISTRIBUTION



FORT MADISON LABORSHED AREA

CONCENTRATION OF RESPONDENTS WITHIN THE LABORSHED AREA
WITH TRANSFERABLE EXPERIENCE/SKILLS BY PLACE OF RESIDENCE



Workers who have transferable experience/skills in the industry are currently commuting an average of 13 miles one way for work. Those who are likely to change/accept employment are willing to commute an average of 25 miles one way for the right employment opportunity.

FOR MORE INFORMATION REGARDING THE FORT MADISON, IA LABORSHED, CONTACT:

LABOR CHARACTERISTICS



WAREHOUSE & DISTRIBUTION

ESTIMATED AVAILABLE LABOR PER OCCUPATIONAL CATEGORY:

- Automotive Service Technicians & Mechanics - 1,069
- Heavy & Tractor-Trailer Truck Drivers - 2,351
- Industrial Machinery Mechanics - 212
- Inspectors, Testers, Sorters, Samplers, & Weighers - 213
- Installation, Maintenance, & Repair Workers - 1,710
- Laborers & Freight, Stock, & Material Movers, Hand - 429
- Locomotive Engineers - 214
- Packers & Packagers, Hand - 430
- Production Workers, All Other - 3,206
- Production, Planning, & Expediting Clerks - 640
- Railroad Conductors & Yardmasters - 215
- Stock Clerks & Order Fillers - 426
- Supervisors of Mechanics, Installers, & Repairers - 427
- Supervisors of Production & Operating Workers - 641
- Team Assemblers - 428
- Transportation Inspectors - 216
- Transportation, Storage, & Distribution Managers - 425

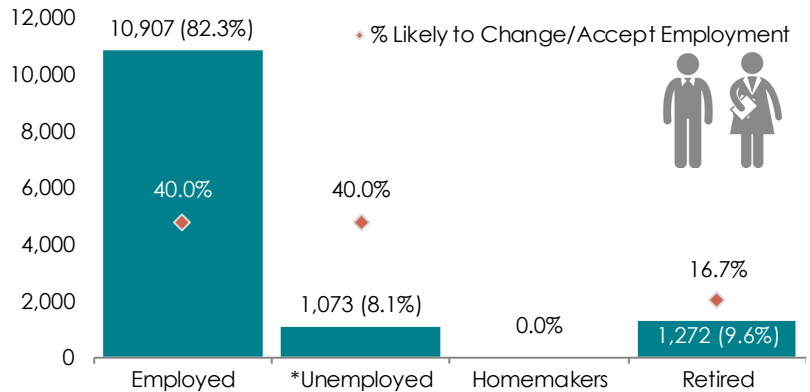
AN ESTIMATED TOTAL OF **13,252** PEOPLE IN THE LABORSHED AREA

UNDEREMPLOYMENT (ESTIMATED):

- Low hours - 1.6% (30)
- Low income - 3.2% (60)
- Mismatch of skills - 8.1% (151)
- Total - 11.3% (211)

(Individuals counted only once when estimating Total Underemployment.)

ESTIMATED TOTAL BY EMPLOYMENT STATUS (PERCENTAGE):



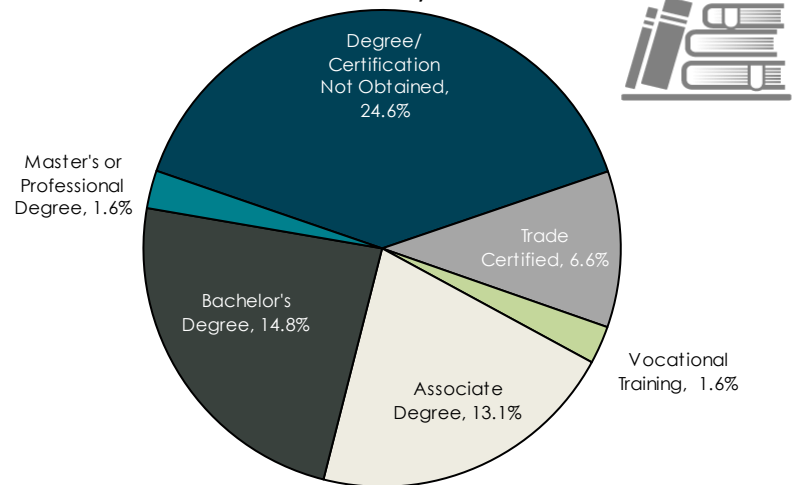
*Employment status is self-identified by the survey respondent. The unemployment percentage does not reflect the unemployment rate published by the U.S. Bureau of Labor Statistics, which applies a stricter definition.

EMPLOYMENT STATS:

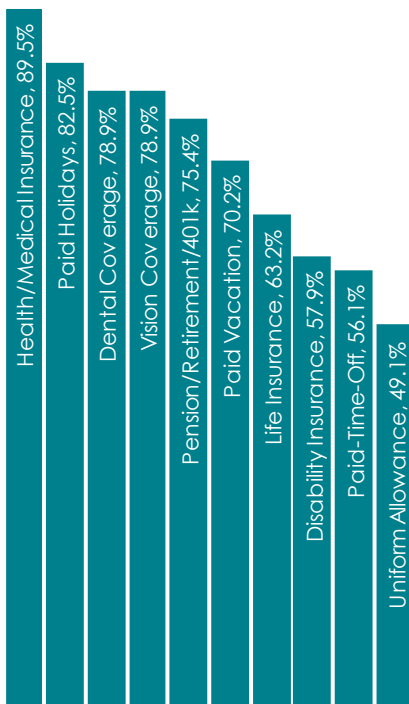
- 65.6% paid an hourly wage
- 93.5% are/were employed full-time
- 6.5% are/were employed part-time
- 9.8% are/were self-employed
- 10.0% hold two or more jobs
- Currently working an average of 44 hours/week

EDUCATIONAL LEVEL:

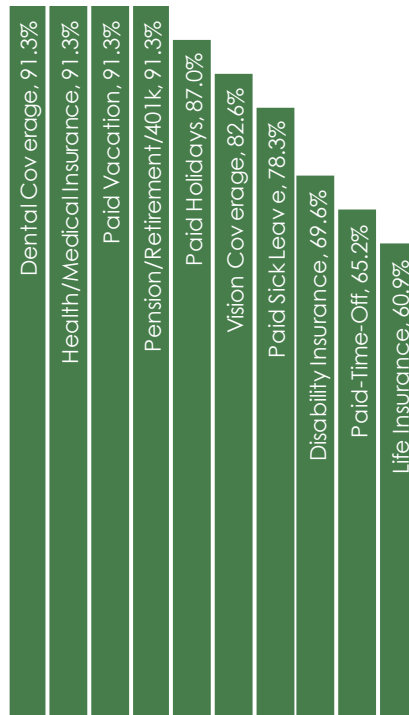
(62.3% HAVE AN EDUCATION BEYOND HIGH SCHOOL)



CURRENT BENEFITS:



DESIRED BENEFITS:



TOP JOB SEARCH RESOURCES:

(For those seeking employment opportunities, by use.)

- Internet - 59.3%
 - www.indeed.com
 - www.iowaworks.gov
 - Company/organization websites
- IowaWORKS Centers - 40.7%
- Networking through friends, family or acquaintances - 32.2%
- Job/Career Fairs - 23.7%



WORKPLACE FLEXIBILITY:

(by percent of interest)

- Varied shifts - 75.0%
- Job sharing - 63.2%
- Cross-training - 60.0%
- Job teams - 45.0%
- Temporary work - 27.3%
- Seasonal work - 22.7%



LABOR CHARACTERISTICS



WAREHOUSE & DISTRIBUTION

OCCUPATION	OCCUPATIONAL CODE	MEAN WAGE	ENTRY WAGE	EXPERIENCED WAGE	MEDIAN WAGE	MEAN ANNUAL SALARY
Automotive Service Technicians and Mechanics	49-3023	\$17.57	\$11.33	\$20.70	\$15.88	\$36,555
Bus and Truck Mechanics and Diesel Engine Specialists	49-3031	\$20.44	\$15.57	\$22.87	\$19.75	\$42,509
Cleaners of Vehicles and Equipment	53-7061	\$14.10	\$8.50	\$16.89	\$16.01	\$29,318
Conveyor Operators and Tenders	53-7011	\$15.03	\$11.14	\$16.97	\$13.94	\$31,256
Dispatchers, Except Police, Fire, and Ambulance	43-5032	\$21.92	\$13.37	\$26.20	\$22.67	\$45,596
First-Line Supervisors of Mechanics, Installers, and Repairers	49-1011	\$28.95	\$17.31	\$34.77	\$28.76	\$60,215
First-Line Supervisors of Production and Operating Workers	51-1011	\$29.73	\$18.98	\$35.11	\$27.86	\$61,847
Heavy and Tractor-Trailer Truck Drivers	53-3032	\$19.84	\$14.54	\$22.50	\$19.23	\$41,275
Helpers--Production Workers	51-9198	\$14.90	\$10.77	\$16.97	\$15.24	\$30,994
Industrial Machinery Mechanics	49-9041	\$24.22	\$17.18	\$27.75	\$25.12	\$50,387
Inspectors, Testers, Sorters, Samplers, and Weighers	51-9061	\$18.07	\$13.38	\$20.42	\$16.95	\$37,593
Laborers and Freight, Stock, and Material Movers, Hand	53-7062	\$16.46	\$11.75	\$18.82	\$15.97	\$34,239
Light Truck or Delivery Services Drivers	53-3033	\$15.23	\$9.59	\$18.04	\$13.69	\$31,671
Logisticians	13-1081	\$30.59	\$22.19	\$34.79	\$28.84	\$63,627
Machine Feeders and Offbearers	53-7063	\$21.98	\$19.75	\$23.10	\$22.63	\$45,729
Maintenance and Repair Workers, General	49-9071	\$21.80	\$13.22	\$26.09	\$20.85	\$45,344
Packers and Packagers, Hand	53-7064	\$12.73	\$11.26	\$13.46	\$12.32	\$26,470
Production Workers, All Other	51-9199	\$21.91	\$12.32	\$26.71	\$24.63	\$45,575
Production, Planning, and Expediting Clerks	43-5061	\$23.49	\$16.08	\$27.20	\$22.11	\$48,866
Shipping, Receiving, and Traffic Clerks	43-5071	\$15.85	\$11.90	\$17.82	\$14.73	\$32,970
Stock Clerks and Order Fillers	43-5081	\$13.10	\$9.28	\$15.01	\$12.24	\$27,255
Transportation, Storage, and Distribution Managers	11-3071	\$42.90	\$30.68	\$49.02	\$43.76	\$89,238

The 2019 Iowa Wage data for the Fort Madison Laborshed area was produced by the Labor Force & Occupational Analysis Bureau to provide communities local information on wages by occupation. The source of the wage and employment data is based on the May 2018 OES estimates. Additional occupational wage and employment data can be found at www.iowalmi.gov/laborshed.