

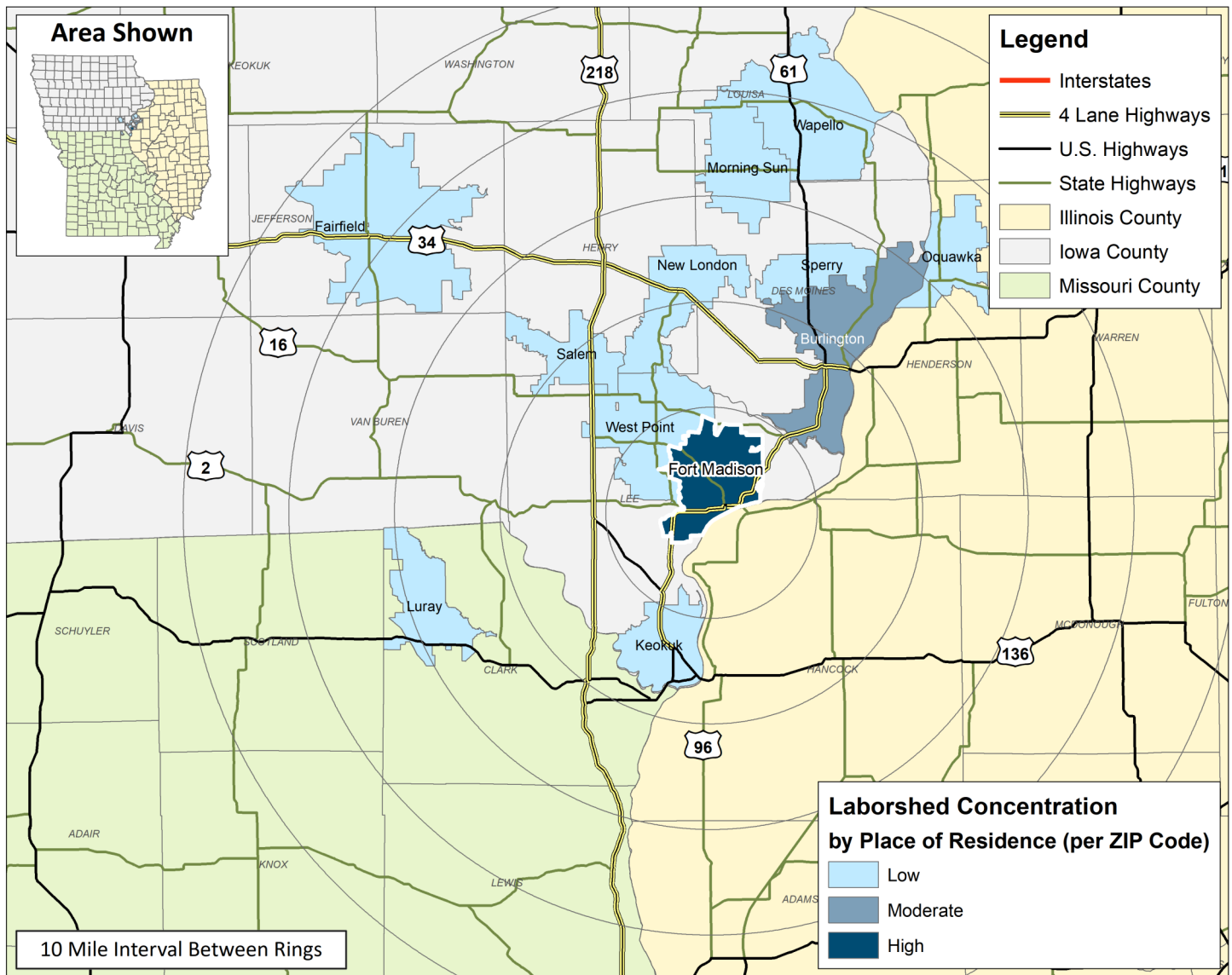
LABOR CHARACTERISTICS

BIOTECHNOLOGY



FORT MADISON LABORSHED AREA

CONCENTRATION OF RESPONDENTS WITHIN THE LABORSHED AREA
WITH TRANSFERABLE EXPERIENCE/SKILLS BY PLACE OF RESIDENCE



Workers who have transferable experience/skills in the industry are currently commuting an average of 13 miles one way for work. Those who are likely to change/accept employment are willing to commute an average of 17 miles one way for the right employment opportunity.

FOR MORE INFORMATION REGARDING THE FORT MADISON, IA LABORSHED, CONTACT:

LABOR CHARACTERISTICS



BIOTECHNOLOGY

ESTIMATED AVAILABLE LABOR PER OCCUPATIONAL CATEGORY:

- Chemists - 212
- Dietetic Technicians - 216
- Dietitians & Nutritionists - 214
- Engineers, All Other - 853
- Farmers, Ranchers, & Other Agricultural Managers - 1,493
- Farmworkers, Farm, Ranch, & Aquacultural Animals - 426
- Industrial Engineers - 425
- Industrial Production Managers - 210
- Inspectors, Testers, Sorters, Samplers, & Weighers - 216
- Life, Physical, & Social Science Technicians, All Other - 213
- Medical & Clinical Laboratory Technicians - 215
- Natural Sciences Managers - 211
- Supervisors of Production & Operating Workers - 640

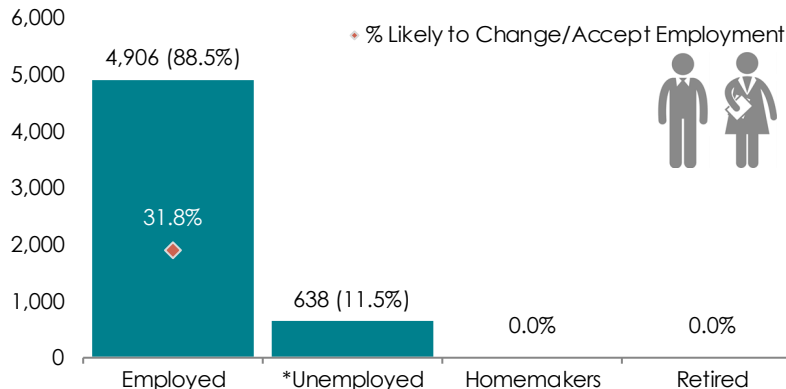
AN ESTIMATED TOTAL OF **5,544** PEOPLE IN THE LABORSHED AREA

UNDEREMPLOYMENT (ESTIMATED):

- Low hours - 0.0%
- Low income - 0.0%
- Mismatch of skills - 3.8% (30)
- Total - 3.8% (30)

(Individuals counted only once when estimating Total Underemployment.)

ESTIMATED TOTAL BY EMPLOYMENT STATUS (PERCENTAGE):



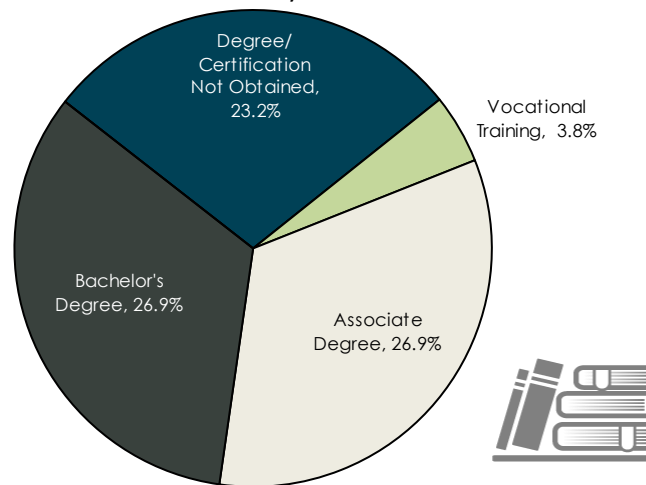
*Employment status is self-identified by the survey respondent. The unemployment percentage does not reflect the unemployment rate published by the U.S. Bureau of Labor Statistics, which applies a stricter definition.

EMPLOYMENT STATS:

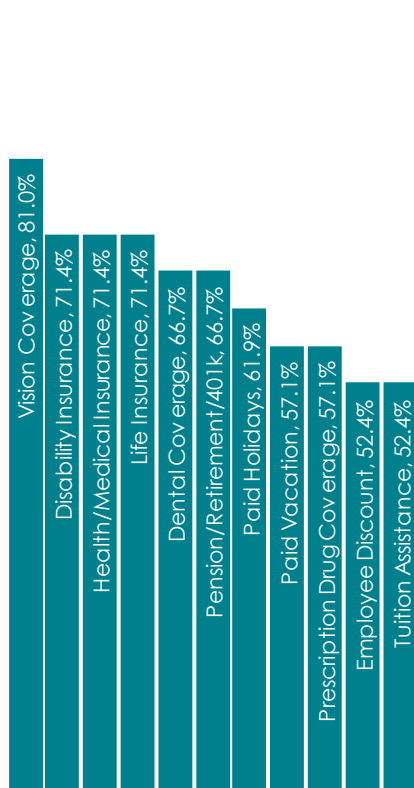
- 52.0% paid an annual salary
- 96.0% are/were employed full-time
- 4.0% are/were employed part-time
- 19.2% are/were self-employed
- 13.0% hold two or more jobs
- Currently working an average of 49 hours/week

EDUCATIONAL LEVEL:

(80.8% HAVE AN EDUCATION BEYOND HIGH SCHOOL)



CURRENT BENEFITS:



DESIRED BENEFITS:



TOP JOB SEARCH RESOURCES:

(For those seeking employment opportunities, by use.)

- Internet - 68.0%
 - www.indeed.com
 - www.monster.com
- Networking through friends, family or acquaintances - 48.0%
- IowaWORKS Centers - 32.0%
- Private Employment Services - 32.0%



WORKPLACE FLEXIBILITY:

(by percent of interest)

- Job sharing - 44.4%
- Cross-training - 33.3%
- Varied shifts - 33.3%
- Job teams - 11.1%
- Seasonal work - 11.1%
- Temporary work - 0.0%



LABOR CHARACTERISTICS



BIOTECHNOLOGY

OCCUPATION	OCCUPATIONAL CODE	MEAN WAGE	ENTRY WAGE	EXPERIENCED WAGE	MEDIAN WAGE	MEAN ANNUAL SALARY
Agricultural and Food Science Technicians	19-4011	\$19.95	\$14.78	\$22.53	\$18.64	\$41,496
Architectural and Engineering Managers	11-9041	\$52.49	\$39.42	\$59.03	\$48.54	\$109,188
Chemical Engineers	17-2041	\$49.94	\$35.79	\$57.01	\$47.84	\$103,875
Chemical Technicians	19-4031	\$24.72	\$19.60	\$27.28	\$23.31	\$51,409
Chemists	19-2031	\$29.81	\$22.06	\$33.69	\$27.34	\$62,012
Conservation Scientists	19-1031	\$43.58	\$19.47	\$55.64	\$29.63	\$90,648
Dietitians and Nutritionists	29-1031	\$16.14	\$8.70	\$19.86	\$11.56	\$33,566
Engineering Technicians, Except Drafters, All Other	17-3029	\$28.11	\$19.26	\$32.53	\$27.33	\$58,468
Engineers, All Other	17-2199	\$37.65	\$22.52	\$45.22	\$38.49	\$78,321
Environmental Scientists and Specialists, Including Health	19-2041	\$28.26	\$21.52	\$31.63	\$23.73	\$58,789
Farmers, Ranchers, and Other Agricultural Managers	11-9013	\$34.51	\$20.08	\$41.72	\$28.37	\$71,780
Farmworkers and Laborers, Crop, Nursery, and Greenhouse	45-2092	\$11.86	\$9.06	\$13.26	\$10.99	\$24,669
First-Line Supervisors of Farming, Fishing, and Forestry Workers	45-1011	\$25.01	\$20.73	\$27.14	\$24.67	\$52,011
First-Line Supervisors of Production and Operating Workers	51-1011	\$29.73	\$18.98	\$35.11	\$27.86	\$61,847
Forest and Conservation Technicians	19-4093	\$23.72	\$20.80	\$25.18	\$23.21	\$49,344
Industrial Engineers	17-2112	\$37.97	\$29.48	\$42.22	\$36.95	\$78,983
Industrial Production Managers	11-3051	\$49.90	\$33.35	\$58.18	\$46.96	\$103,800
Inspectors, Testers, Sorters, Samplers, and Weighers	51-9061	\$18.07	\$13.38	\$20.42	\$16.95	\$37,593

The 2019 Iowa Wage data for the Fort Madison Laborshed area was produced by the Labor Force & Occupational Analysis Bureau to provide communities local information on wages by occupation. The source of the wage and employment data is based on the May 2018 OES estimates. Additional occupational wage and employment data can be found at www.iowalmi.gov/laborshed.

